

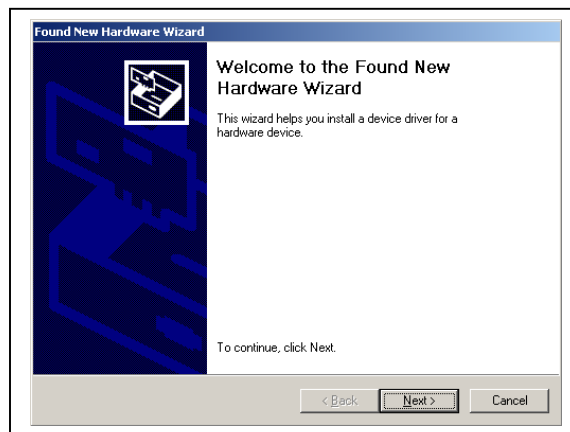
## USB port installation – USB Mini and Micro Logger

### VERY IMPORTANT NOTE:

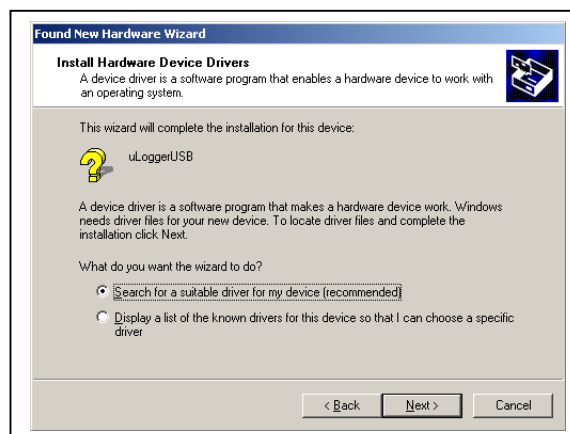
- 1) Please **DO NOT** use the Automatic Installation procedure offered by your Windows Operating System and carefully install it as described here. If you do not adhere to this, your logger **WILL NOT** work and a very complicated computer repair, including removing registry files **WILL** follow!
- 2) Also make sure that you have copied the latest fp.exe file from the CD as instructed in the CD Installation document.

### FOR WINDOWS 2000 USERS

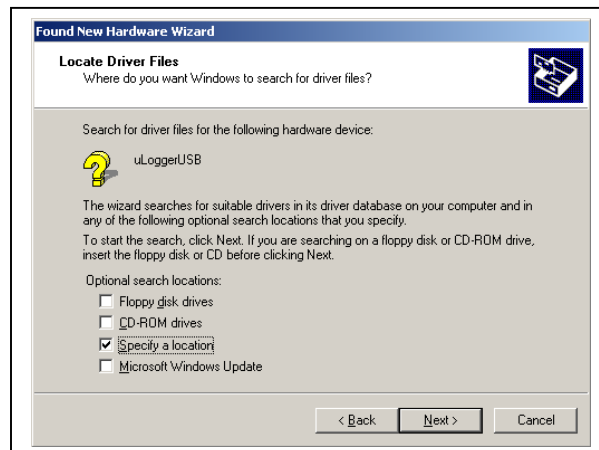
- 1) Connect a USB cable to the preferred USB port on your computer and your logger. Do not switch on the logger as it will get power through the USB port. Note that the “Status” and “Memory” LED’s will be flashing green.
- 2) Your computer will detect the new software and the Install Wizard will appear. You should see the following screen.



- 3) Click on “Next” and then you should see the following screen.



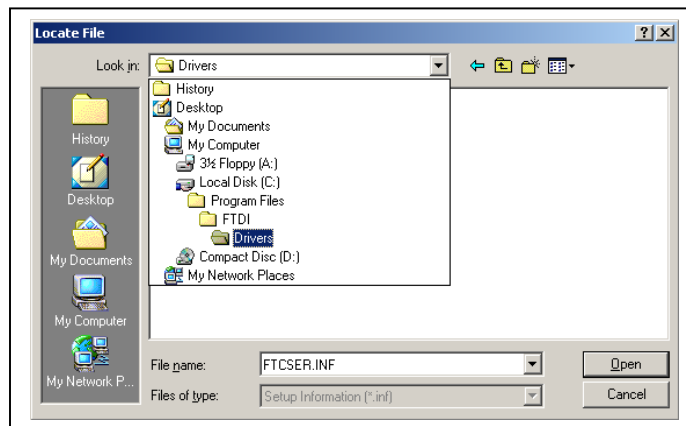
- 4) Select the “Search for a suitable driver for my device” and then click on “Next”. You should see the following screen.



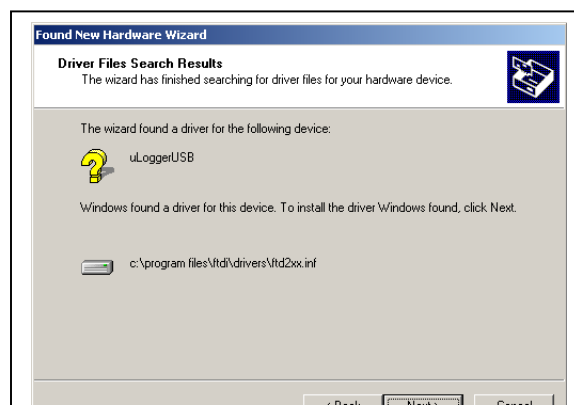
- 5) Under optional search locations, make sure that only “Specify a location” is ticked and then click on “Next”. You should see the following screen.



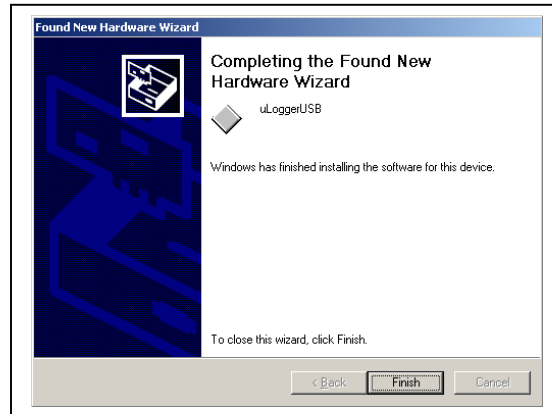
- 6) Use the browse button to navigate to and select the folder “C:\Program Files\FTDI\Drivers” as shown below.



- 7) Click on “Open” and you should see the screen below.



8) Click on “Next” and you should see the screen below.

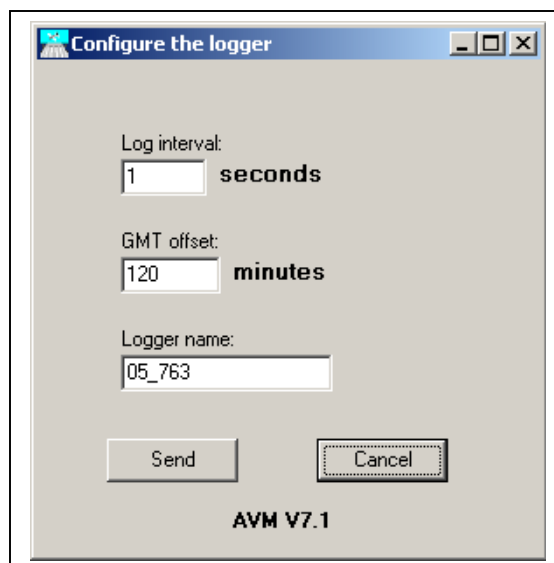


9) Click on “Finish” to complete the installation.

10) After installation and with your logger still plugged in, you should see a steady green on the “Status” LED, indicating that the computer recognizes the logger.

With the USB drivers installed you still have to find out on what communications port it has been installed. This is normally Com 3, 4 or 5. In order to find out which one, please do the following.

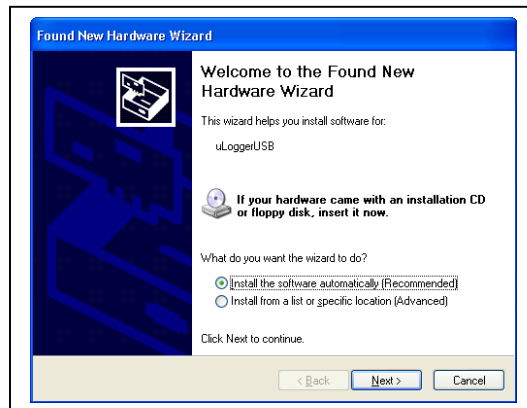
- 1) Open the Air Observer Application and click on “Logger”. Select Com3, 4 or 5 and to select one of the ports.
- 2) Then click on “Logger” again. Then click on “Configure”. If you have selected the wrong one, you will see an error message. If you have selected the right one, you will see the following screen:



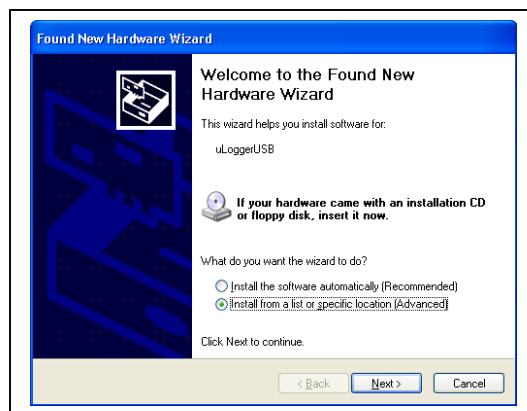
- 3) You have successfully installed your USB Logger!

#### FOR WINDOWS XP USERS:

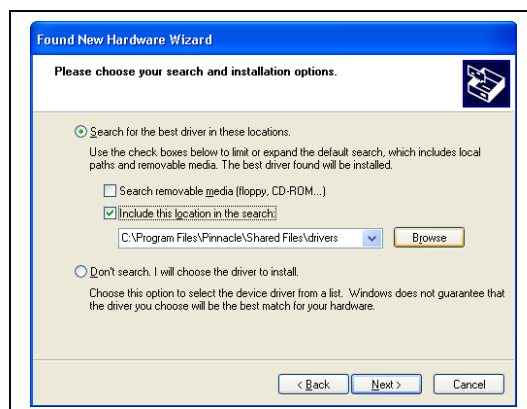
- 1) Connect a USB cable to the preferred USB port on your computer and your logger. Do not switch on the logger as it will get power from the USB port.
- 2) Note that the “Status” LED will flash green at this stage.
- 3) Your computer will detect the new software and the Install Wizard will appear. You should see the following screen.



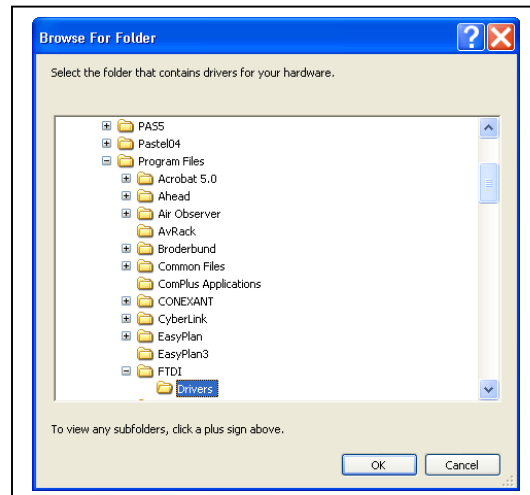
- 4) Click on “Next” and then you should see the following screen.



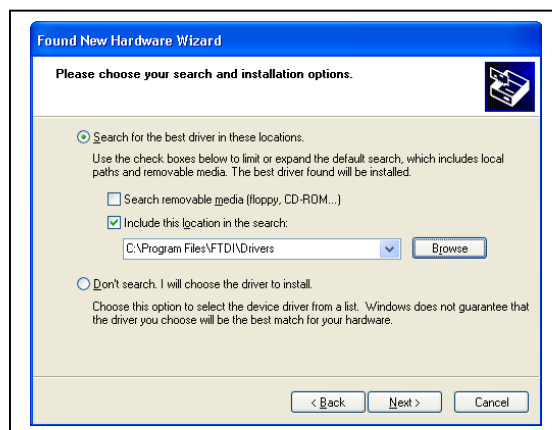
- 5) Select the “Install from a list or specific location (advanced)” option and click on “Next”. You should see the following screen.



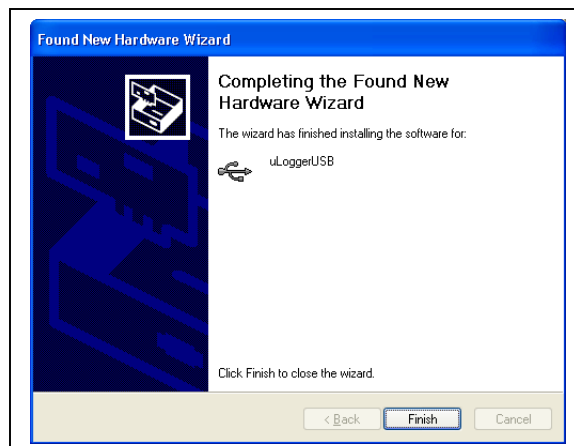
- 6) Select the “Search for the best driver in these locations”. Also tick the “Include this location in the search” option. Then click on “Browse”. You should see the following screen.



- 7) Browse to the C:\Program Files\FTDI\Drivers folder, double click on it and click “OK”. You should see the following screen.



- 8) Click on “Next” and you will notice the installation taking place and the following screen should appear after a few seconds.



- 9) Click on “Finish”.
- 10) After installation and with your logger still plugged in, you should see a steady green on the “Status” LED, indicating that the computer recognizes the logger.

With the USB drivers installed you still have to find out on what communications port it has been installed. This is normally Com 3, 4 or 5. In order to find out which one, please do the following.

- 1) Open the Air Observer Application and click on “Logger”. Select Com3, 4 or 5 and to select one of the ports.
- 2) Then click on “Logger” again. Then click on “Configure”. If you have selected the wrong one, you will see an error message. If you have selected the right one, you will see the following screen:



- 4) You have successfully installed your USB Logger!

(File: USB Port Installation)