



11th FAI

World Paramotor Championship

BRAZIL 2022

CAMPEONATO MUNDIAL DE PARAMOTOR

20th to 30th abril de 2022

Saquarema – Rio de Janeiro – Brasil





Dates

Official Registration: April 20 – 09:00 to 17:00hs
Mandatory Safety Briefing: April 20 – 17:00 to 18:00hs
First Team leader meeting: April 21 – 09:00 to 11:00hs
Official training task: April 21 – After 15:00 and April 26
Opening ceremony / Parade: April 22 – 19:30hs
Contest flying days: April 23 to 30
Prize-giving & Closing Ceremony: April 30 – 15:00hs

20th to 30th of April 2022





We are waiting with open arms!



Many more information at:

<http://wpc2022.com.br/en/>

E-mail: info@wpc2022.com.br



Amazing For
Flying Weather

A wonderful time
to fly in the
region.

SAQUAREMA





RIO DE JANEIRO ARRIVING AIRPORT

The best option is to fly directly to Rio de Janeiro

Rio de Janeiro International Airport – Galeão –
Antônio Carlos Jobim (GIG) - www.riogaleao.com

Distance from the airport to the venue 93,4 Km

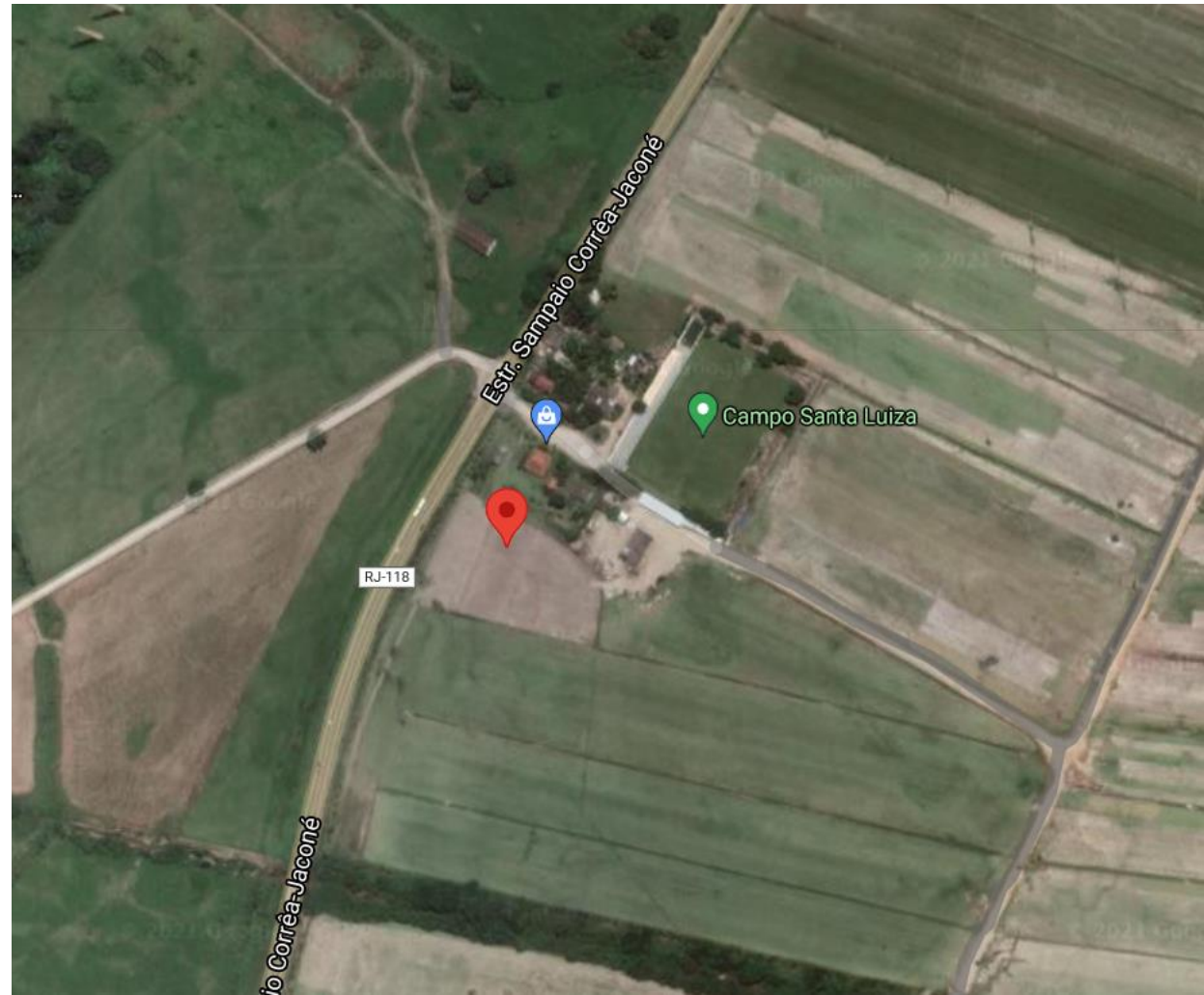


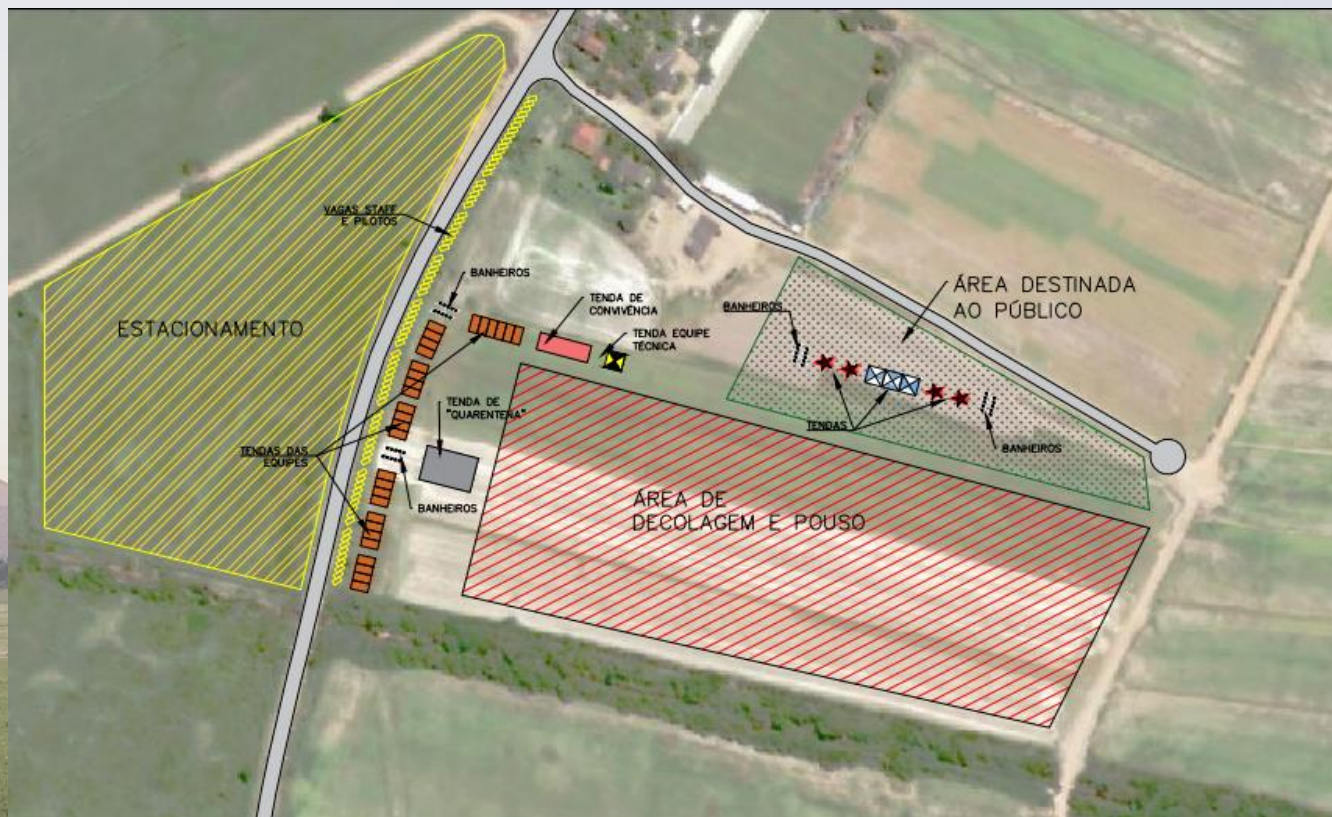
Venue Place



- Location accessible by all types of cars
- Large, grassy, 1km long takeoff area with no obstacles in all directions
- Enough space for helicopter landings
- Holds 3000 spectators and 500 cars
- close to convenience stores
- Bathrooms (1/30 people)
- 8 6x6m tents for the public
- 1 20x30m tent for organizing the event
- 1 auditorium for 150 people
- 30 tents of 6x6m (1/team)
- Sound system (music and announcements)
- Rest area for competitors
- VIP area for staff and competitors

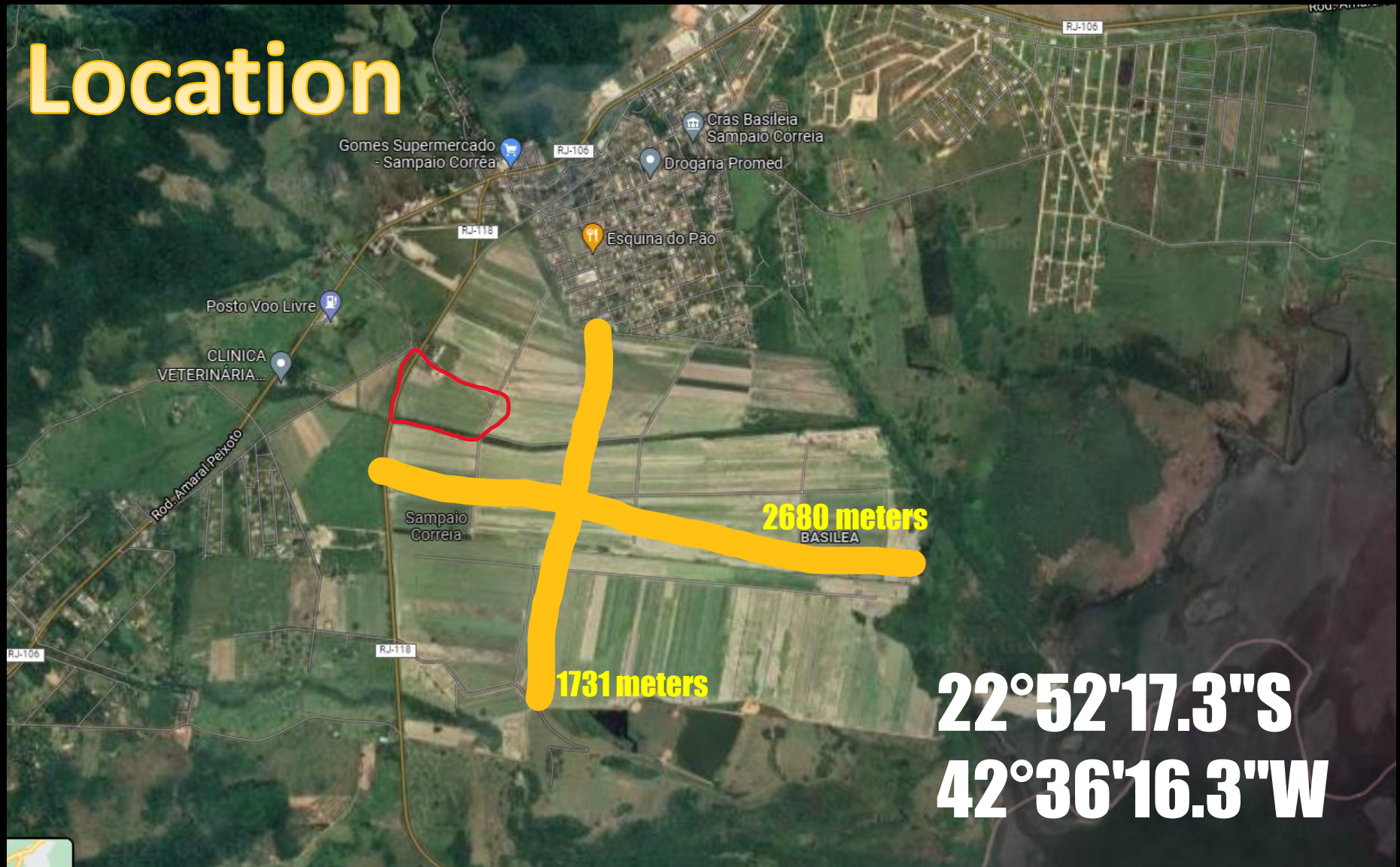
Venue Infrastructure







Location



Multiple deck Arena



Mapa sem título

Escreva uma descrição para seu mapa.

Legenda

- ? ?
- ? ?
- ? ? ?Pos

RJ-106

Posto Voo Livre

Secretaria agricultura Saquarema

Área de estacionamento público

Public
Parking

Estr. Sampaio Corrêa Jacone

King Grass Rio

Área destinada ao público

Public

Google Earth

Image © 2021 Maxar Technologies

400 m

Mapa sem título

Escreva uma descrição para seu mapa.

Legenda

King Grass Rio

Área de estacionamento

Staf e pilotos

Area técnica

Área de convivência

Pilot Area

Box das equipes

Banheiros Staf e Pilotos

Google Earth

Image © 2021 Maxar Technologies

200 m







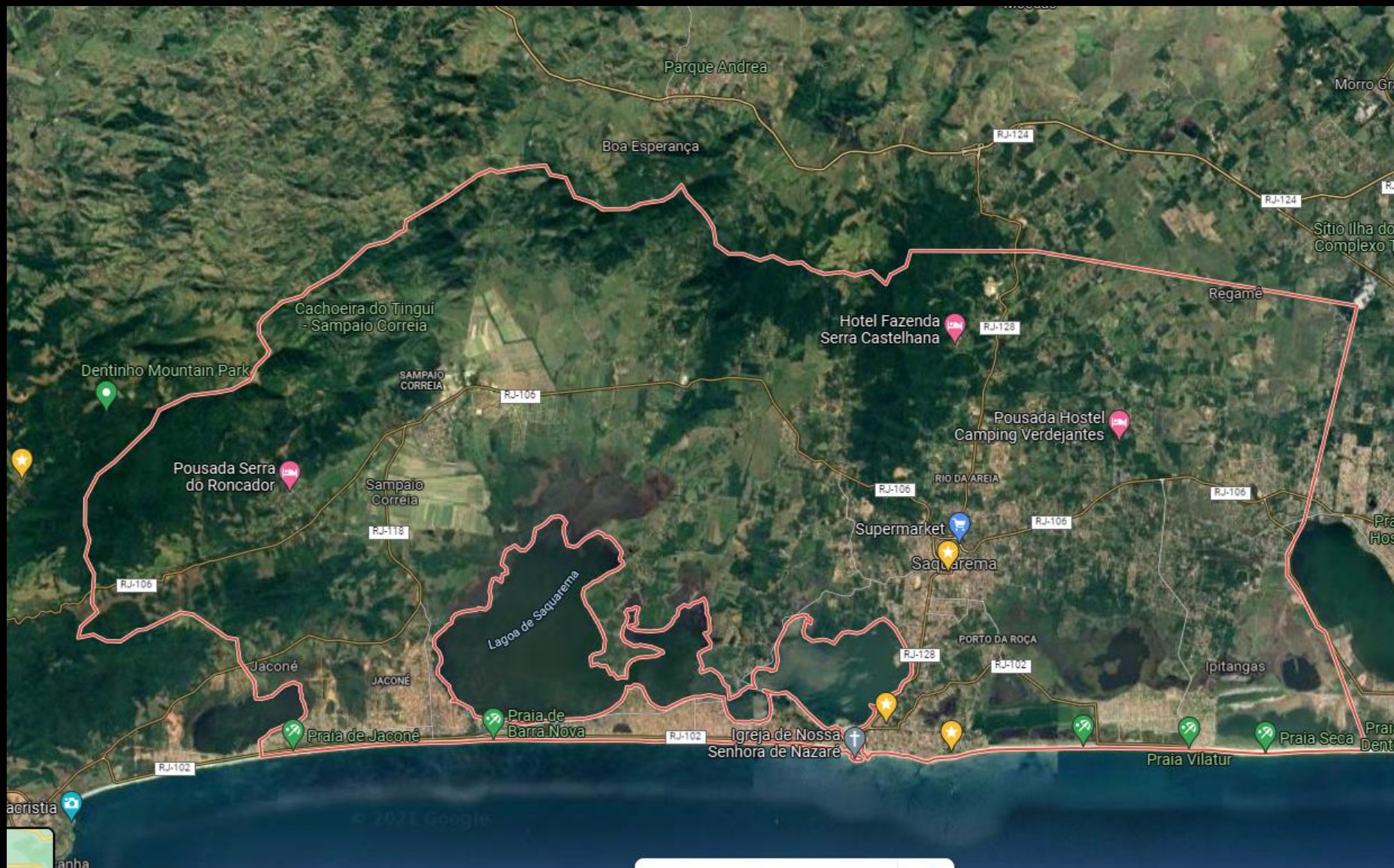
Gazebo Models



Large Gazebos



Teams Tent whit eletricity





ENTRY FEES

The Championships are open to all Active Member and Associate Member countries of FAI who may enter:

EACH COUNTRY

- 6 pilots in class PF1m (foot launch, male) + 1 pilot PF1f (foot launch, female)
 - 6 pilots in class PL1 (paratrike) + 1 wheelchair pilot
 - 4 pilots + copilot in class PL2 (paratrike tandem)
- €450 (For hundred and fifty) for Pilot and Copilot in Each Class
 - €150 (One hundred and fifty euros) for Team Leader, Assistant, Mechanic, Guest.

The entry fee includes:

- Competition operations (setting, controlling, and evaluating the tasks),
- All competition materials (maps, task descriptions, control point atlases, pylons, stickers, etc.),
- Free use of the airfield and free entry to all official events,
- Place for each team with water, electricity and one tent,
- Preferential prices to eat.

Many AirBnB



More Information at the web site

Interesting Places Around



Live Media



My



Freeflight
4.85K subscribers

SUBSCRIBED



HOME

VIDEOS

PLAYLISTS

COMMUNITY

CHANNELS

ABOUT



Uploads ▾ PLAY ALL

≡ SORT BY



CAMPEONATO BRASILEIRO
DE PARAPENTE - RAFA x...

620 views • 12 hours ago

Subtitles



MUNDIAL DE PARAPENTE -
ARGENTINA 2021 |...

512 views • 5 days ago



MUNDIAL DE PARAPENTE -
ARGENTINA 2021 | PROVA...

1.1K views • Streamed 6 days ago



CAMPEONATO BRASILEIRO
DE PARAPENTE - AS...

10K views • 7 days ago

Subtitles



MUNDIAL DE PARAPENTE -
ARGENTINA 2021 | PROVA...

834 views • Streamed 7 days ago



MUNDIAL DE PARAPENTE -
ARGENTINA 2021 |...

563 views • Streamed 8 days ago



1:10:53



1:06



3:45:40



4:16:51



2:53:24



1:20:55

Score System – FAST TRACK

