



**Estonian  
Aerosports  
Federation**



# European Paramotor Championships 2013



**23 May – 2 June 2013**



Location: Otepää, Estonia



**ORGANISER:**



Estonian Paragliding & Paramotoring Association  
[www.eppa.ee](http://www.eppa.ee)



# Estonia



- Mission
- Venue
- Weather
- Dates
- Program
- Officials
- Classes
- Media
- Fees



11/8/2012

# ***Mission statement***

**It is an utmost privilege  
for Estonia to host the 2013**

**European Paramotor Championships.**

**We are proud to invite all pilots for an enjoyable and successful event,  
dedicated fully to the competing pilots and the Teams.**

**EPC 2013 will be an open event for all pilots around the globe.**

**We are aiming to provide a fascinating program, with lots of  
practice, many new and interesting tasks, plenty of free flying,  
some great weather alternatives, exciting afterflying events and  
of course, some good company, so don't forget to bring your  
family and friends.**

**Welcome to Estonia!**

11/8/2012

The EPC 2013 Organising Committee



# Map of Estonia

The competition area is located in southern Estonia, in the vicinity of Otepää.





# *Venue*

## **Why Otepää?**

**A town famous for tourism and sports in Estonia**

**An Airspace reserved exclusively for EPC 2013**

**Good access from any direction.** Distance by road: 40 km from Tartu, 40 km from Valga, 70 km from Pechory, 150 km from Pärnu, 225 km from Tallinn, 180 km from Riga in Latvia.  
Nearest airport: Ülenurme, Tartu, 35 km.

**Good and affordable accommodation with flexible catering  
24/7 reserved exclusively for EPC 2013**

**Opening ceremony at the famous Tehvandi Stadium**

**Medivac Air Ambulance service in Otepää**

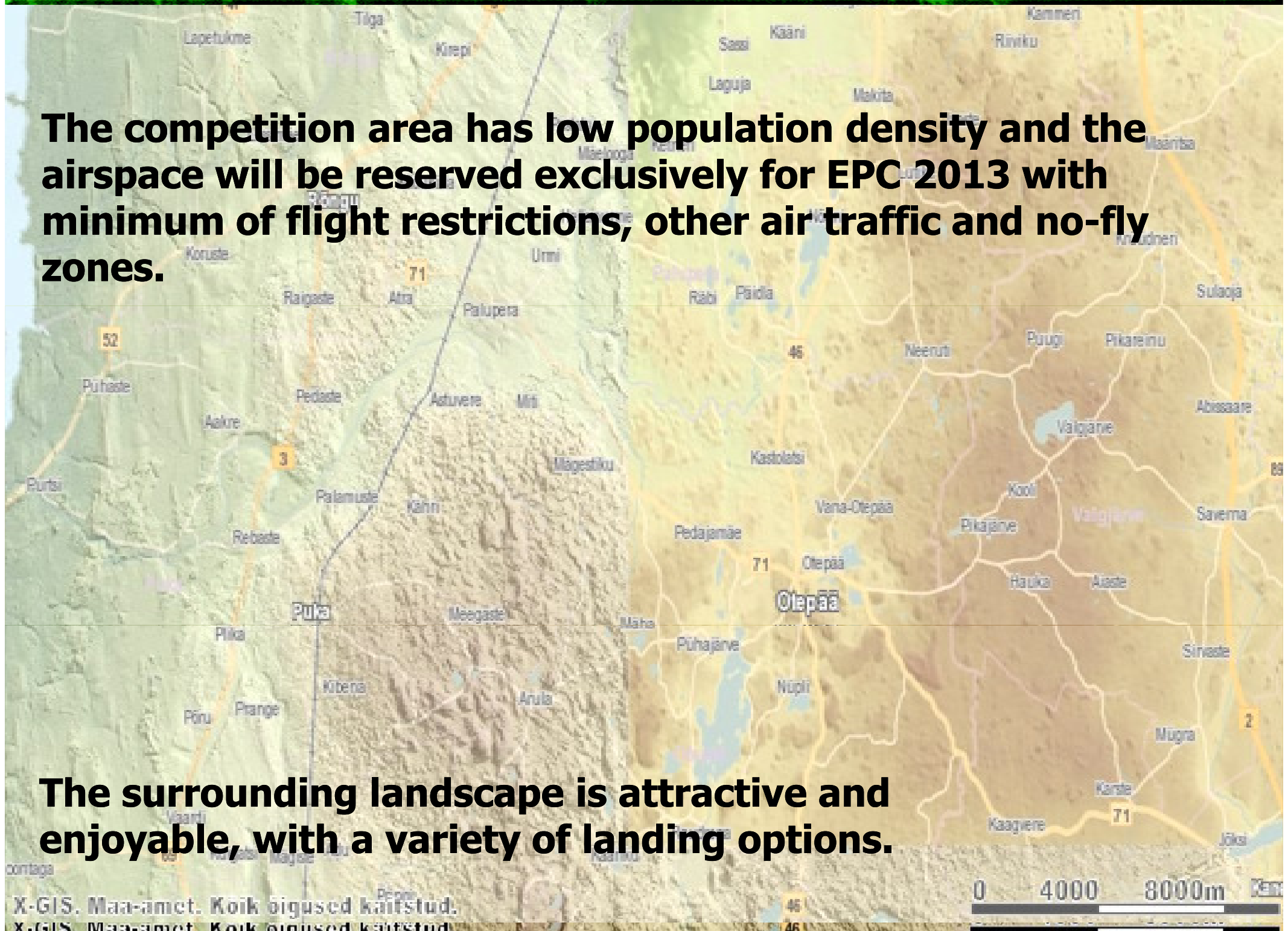
**A good selection of additional activities for family and  
friends or as bad weather alternatives**





**The competition area has low population density and the airspace will be reserved exclusively for EPC 2013 with minimum of flight restrictions, other air traffic and no-fly zones.**

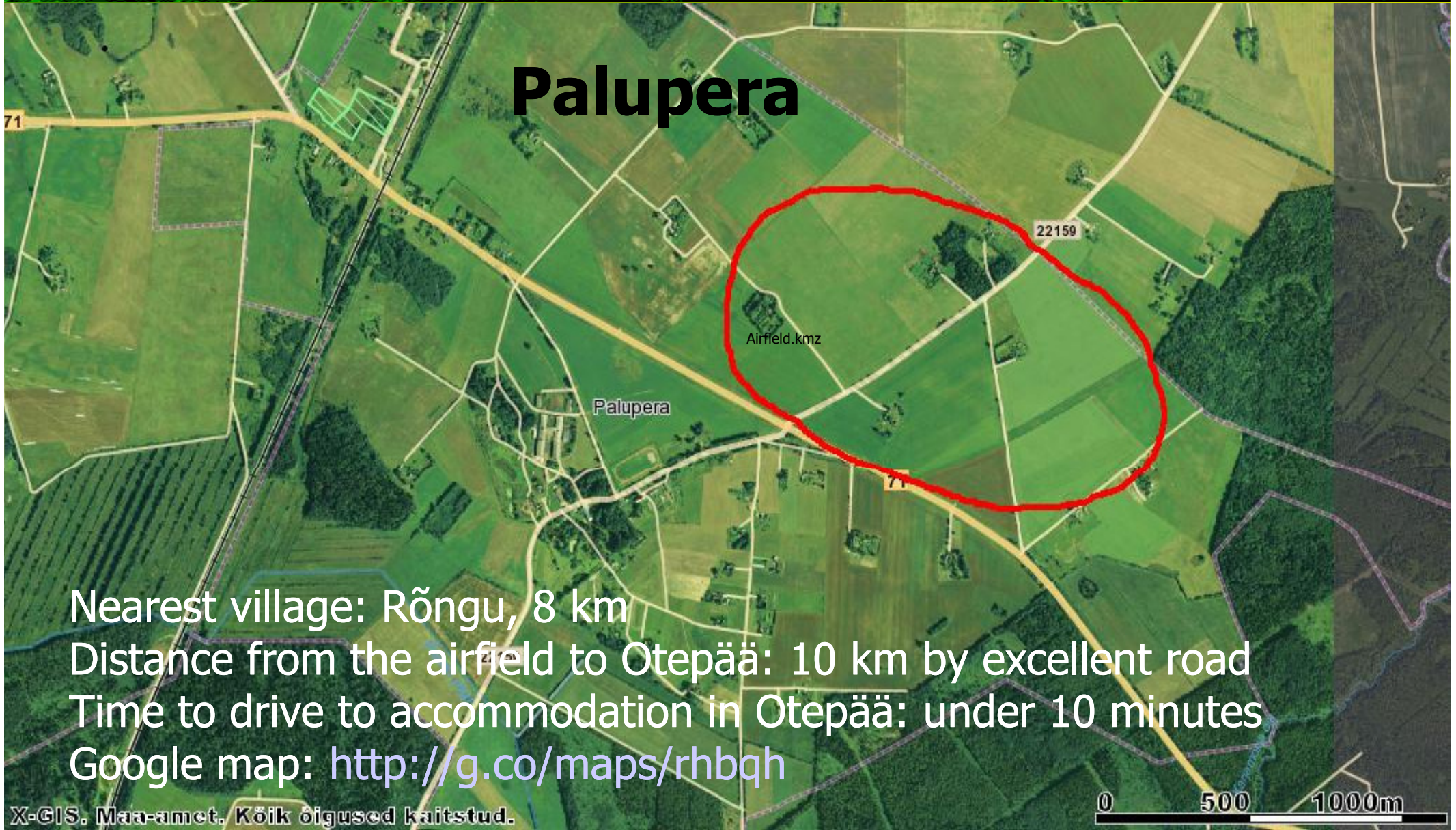
**The surrounding landscape is attractive and enjoyable, with a variety of landing options.**





# ***Airfield / Task area***

Coordinates: 58° 07' 02" N 26° 21' 08" E



## **Palupera**

Nearest village: Rõngu, 8 km  
Distance from the airfield to Otepää: 10 km by excellent road  
Time to drive to accommodation in Otepää: under 10 minutes  
Google map: <http://g.co/maps/rhbqh>



# ***Weather***

- **Average windspeed: 2,6 m/s (9.5 km/h)**
- **Average temperature: 11 – 15 C**
- **At the end of May, peak daytime temperature in Estonia can often reach 25 C and over. At night, temperature can be quite low, even below 10 C.**
- **Such differences in temperature may create strong thermals in the middle of the day, resulting in non-flyable weather conditions typically between 12.00 and 16.00.**
- **At this time of year, Estonia is well known for its very short nights, which means excellent flying conditions early in the morning (from 4.00) and late in the evening (until 22.00).**
- **In order to optimise the best flying weather available, it will be possible to provide quite a strange but very reliable program. Instead of exhaustive parawaiting at midday it will be possible to reverse day and night - to have a rest mainly during daytime and to compete during evenings and early mornings.**



# *Dates*

- **Arrival, registration, inspection & trainings: 16 – 24 May**
- **Free local tour: 16 May**
- **Warm-up competition (WPLC): 17 – 19 May**
- **Free adventure tour: 20 May**
- **Training tasks: 22 -23 May**
- **First Teamleaders' briefing: 24 May**
- **Opening ceremony & welcome dinner: 25 May**
- **Competition flying days: 26 May – 1 June**
- **Last competition task: 1 June afternoon**
- **Weather alternative tour: South Estonia, 26 May – 1 June**
- **Closing Party: 1 June evening**
- **Closing Ceremony & Prizegiving:  
2 June, 12pm - 15pm**
- **Free tour: Tartu 3 June**



# *Opening Program at Tehvandi Stadium, May 25, 2013, evening*



[www.tehvandi.ee](http://www.tehvandi.ee)

Google map: <http://g.co/maps/ejdsu>

Air show with air parade, formation flying, demos, teams' presentations, aerobatics, mixed with the best of local culture and live music.



# *Officials*

- **Event Director: Ott Maaten / EST**
- **Competition Director: Paap Kõlar / EST**
- **Deputy Competition Director: Renatas Samulenas/LIT**
- **Scoring Manager: Olari Ilves / EST**
- **Chief Marshal: Aare Vanari / EST**
- **International Jury: To be defined**
- **Stewards: To be defined**
- **FAI Monitor: Wojtek Domanski / POL**
- **The main personnel is selected from some of the most competent aviators from the Baltic States. They all have significant paramotoring background as pilots and/or as organisers and team leaders at many local and international paramotor competitions in recent years. Some of the personnel have volunteered their services to the organisers of WPC 2012 in Spain.**



# *Classes*

---

**Two Paramotor classes: PF1 & PF2**

**Two Paratrike classes: PL1 & PL2**

**Minimum of 4 countries for a valid class**

**Seven crews plus unlimited all-female crews  
in each class**

**New approach to Team scoring including some  
dedicated Team-only tasks**

**Guest entries for non Europeans**



# *Media*

- EPC Media Service will be established to deal with all media services and public relations.
- Special internet sites [www.eppa.ee](http://www.eppa.ee) and [www.epc2013.ee](http://www.epc2013.ee) will be set up for online news, information, pictures and videos, forums, blogs and other social media.
- The Estonian most popular TV channels will be covering the whole event with specials and daily news.
- Commercial radio stations “Sky +” and “Kuku” will be covering daily specials and news.
- BNS (Baltic News Service) will be provided with news by EPC Media Service daily.
- Video production will be organised for the local and international TV coverage, news, specials and for social media.





# *Entry Fees*

## **Entry Fees:**

- **350.- € for each pilot.**
- **350.- € for each co-pilot (navigator).**
- **150.- € for each Teamleader.**
- **50.- € for each Teamleaders' Assistant.**
- **Entry Fee will be lowered for pilots and co-pilots by 50.- if paid before 1 March 2013.**
- **No fee for family, friends and visitors.**

## **Entry Fees include:**

- **Competition management (setting, organising, controlling and evaluating the tasks, displaying the results, briefings, prizegiving, media coverage etc.).**
- **All competition materials (maps, task descriptions, competition numbers etc.)**
- **Training days arrangements (training task management etc.).**
- **Free use of the airfield.**
- **Weatherproof overnight storage for aircraft and equipment.**
- **Environmental fee (toilets and waste management).**
- **FAI fees.**
- **Free participation on local tours.**
- **Free entrance to all official events, including opening and closing ceremonies with corresponding parties and dinners.**

# ***Accommodation and catering***

- Accommodation is located around Tehvandi stadium



# ***Accommodation & Catering Fees***

## **Pilots' Special Package Deal for Accommodation & Catering:**

**280.- € /person in twin or triple hotel room from 23 May to 2 June**

**25.- € /person per each extra day**

**Package price is valid only if paid before 1 April 2013.**

### **Accommodation & Catering fee include:**

- **Accommodation with late checkout option.**
- **TV, showers and toilets in the room.**
- **Wireless internet .**
- **Use of hotel briefingrooms, meetingrooms, task planning spaces, dining hall & workshop.**
- **Free parking.**
- **Use of saunas every evening according to the program.**
- **Breakfast, lunch and dinner every day, according to the championship's program, starting from the dinner on 23 May evening until the breakfast on 2 June morning.**

### **Note:**

- **Pilot's Special Package Deal is the best possible in the area, negotiated especially for EPC 2013 and valid also for teamleaders, assistants and family members upon availability.**
- **All other deals MUST be negotiated well in advance: [info@eppa.ee](mailto:info@eppa.ee)**

**PS: Camping is not advisable because of mosquitoes and possible cold nights.**



